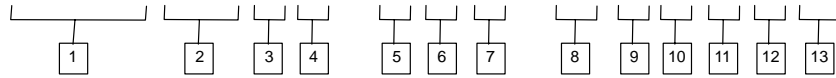


TA1919V20 Pump

Model Code

TA1919 V20 F L - 2 A R - 07 A D 6 H 21



1 Double Transmission Pump
Each rated at 72 l/min (19 USgpm) at 1800 rpm

2 Auxiliary Vane Pump

3 Vane Pump Cover Option (Omit if not required)
F – Flow control
P – Priority flow

4 Rotation Viewed From Shaft End
R – Right hand (clockwise)
L – Left hand (counterclockwise)

5 Input Shaft
2 – SAE B-B splined

6 Control Pintle Location Viewed From Shaft End With Drain Port Up

Code	Pump No. 1	Pump No. 2
A	Right hand side	Right hand side
B	Left hand side	Right hand side
C	Right hand side	Left hand side
D	Left hand side	Left hand side

7 Main Relief Valve
R – Relief valve
O – No relief valve

8 Vane Pump Ring Capacity at 1200 rpm
07 – 26 l/min (7 USgpm)
08 – 30 l/min (8 USgpm)
09 – 34 l/min (9 USgpm)
10 – 37 l/min (10 USgpm)
11 – 41 l/min (11 USgpm)
12 – 45 l/min (12 USgpm)
13 – 49 l/min (13 USgpm)

9 Vane Pump Inlet Position Viewed From Cover End
A – In line with case drain
C – 180° opposite case drain

10 Position of Vane Pump Outlet, or Primary Outlet, Viewed From Cover End
A – Opposite inlet
B – 90° counter-clockwise from inlet
C – In line with inlet
D – 90° clockwise from inlet

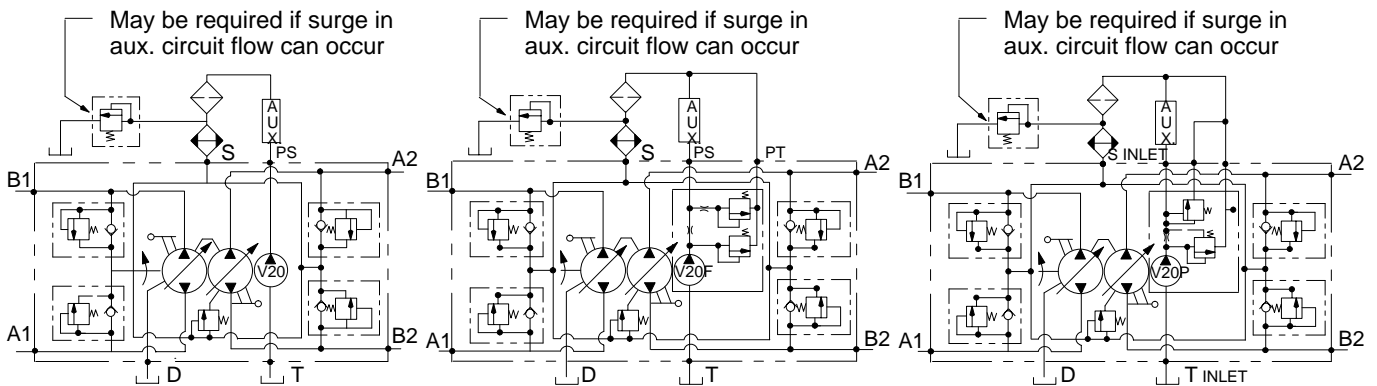
11 Flow Rate Through Orifice In “F” Cover
2, 4, 6, 8 or 10 USgpm

Flow Rate Through Orifice In “P” Cover
2, 2.5, 3, 4, 6 or 8 USgpm

12 Vane Pump Relief Valve Setting, “F” & “P” Cover
A – 17 bar (250 psi)
B – 35 bar (500 psi)
C – 51 bar (750 psi)
D – 70 bar (1000 psi)
E – 86 bar (1250 psi)
F – 100 bar (1500 psi)
G – 120 bar (1750 psi)
H – 140 bar (2000 psi)
J – 155 bar (2250 psi)
K – 175 bar (2500 psi)

13 Design Number

Circuit Diagrams



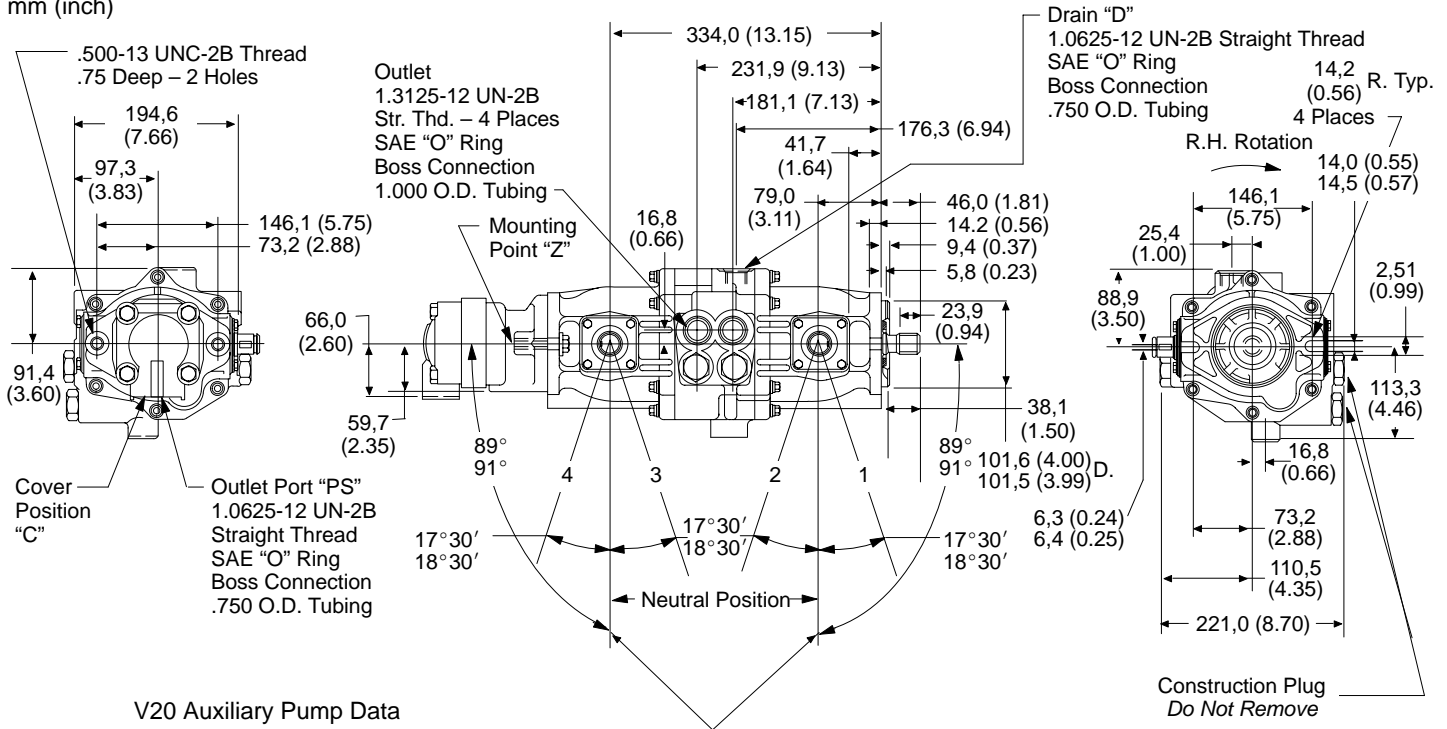
TA1919V20 with Main Relief Valves

TA1919V20F with Main Relief Valves

TA1919V20P with Main Relief Valves

Dimensions

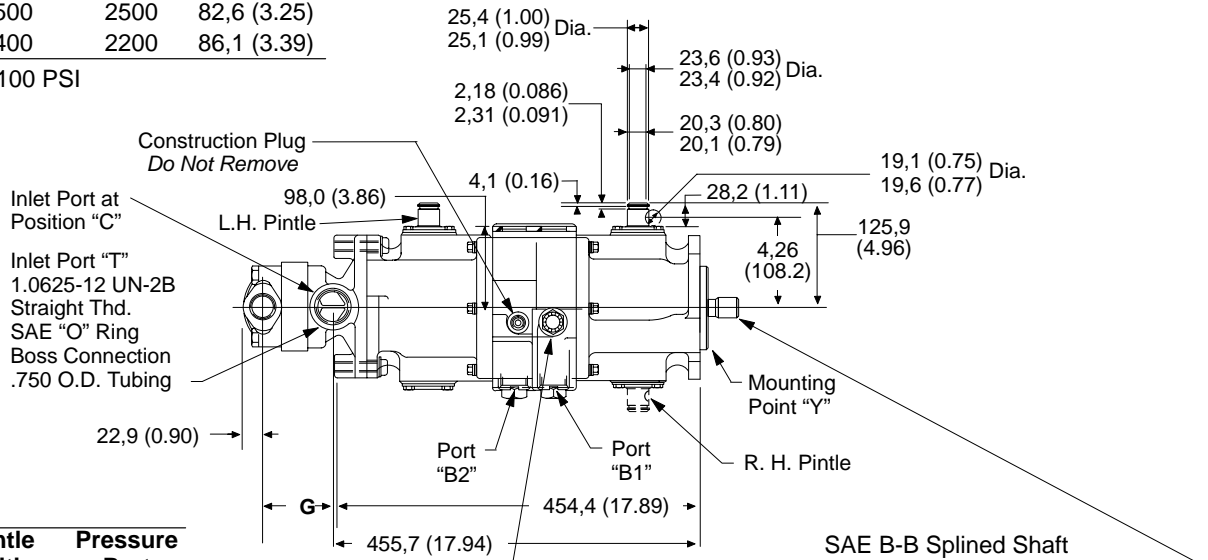
mm (inch)



V20 Auxiliary Pump Data

Ring Size GPM*	Max. RPM	Max. PSI	"A" Dimension
7	3000	2500	77,7 (3.06)
8 & 9	2800	2500	77,7 (3.06)
10 & 11	2500	2500	82,6 (3.25)
12 & 13	2400	2200	86,1 (3.39)

*At 1200 RPM & 100 PSI



Shaft Rotation	Pintle Position	Pressure Port
R.H.	1	A1
R.H.	2	B1
R.H.	3	B2
R.H.	4	A2
L.H.	1	B1
L.H.	2	A1
L.H.	3	A2
L.H.	4	B2

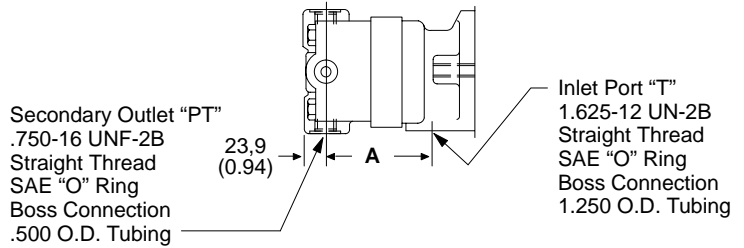
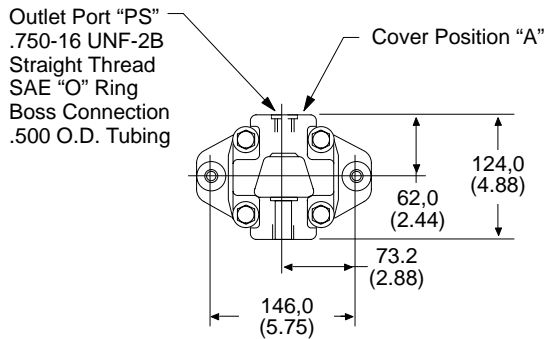
Super charge Inlet "S"
.875-14 UNF-2B Straight Thd.
SAE "O" Ring Boss Connection
.625 O.D. Tubing

Use of a secondary support of unit is required at mounting points "Y" & "Z" as shown. Outboard support to be such that external loads do not cause stress or deflection of the unit structure.

TA1919V20 Pump

Optional V20F Auxiliary Pump

mm (inch)



Ring Size GPM*	Max. RPM	Max. PSI	"G" Dimension
7	3000	2500	101,1 (3.98)
8 & 9	2800	2500	101,1 (3.98)
10 & 11	2500	2500	105.9 (4.17)
12 & 13	2400	2200	109.5 (4.31)

*At 1200 RPM & 100 PSI

Optional V20P Auxiliary Pump

.750-16 UNF-2B Straight Thread
SAE "O" Ring Boss Connection
.500 O.D. Tubing (2 Places)

